

XMLPower srl



XMLPower Overview

- **Company Based in San Donato**
- **XML POWER Drilling, Production and Geological Reporting Software – Lotus Notes ENI-Agip Standard – continued Support as Required**
- **Browser Enabled Version Development**
- **POWER UPLOADER – Lotus Notes Databases to Oracle – continued Support as Required**
- **POWER DOC Low Cost Document Management System – Link to Documentum**
- **POWER STREAM Integrated RealTime Communications Solutions for Rigs/Platforms and Remote Locations**
- **POWER Dish – VSAT and Inmarsat Telecommunications Solutions**

XMLPower – Continued Support & Development

Daily Drilling Report for PROVA on 06/04/2003 - Lotus Notes

File Edit View Create Actions Help

Workspace Replicator Power XML - Daily Reports Daily Drilling Report for PROVA on 06/04/2003

Edit Exit

District/ Affiliate Company		Daily Drilling Report			Well Name	PROVA
Date: 06/04/2003 16		Arpo 2 Cost Centre			Field Name	PROVA
					Permit / Conc No	A.C4.AS

Rig Name	RIG	RT Elevation	54 (m)	Well Code	0000
Type of Rig	JACK UP	Water Depth	-23 (m)	Report No	10 of 25
Contractor	TRANSOCEAN	Rt - 1st flange/top housing	19,7 (m)	Permit / Conc No	A.C4.AS

Well	Last Casing	Next Casing	BOP	Type	Ø (in)	wp (psi)	MD (24:00)	3341 (m)
Ø (in)	9 5/8	7	Stack		13 5/8	10000	TV/D (24:00)	3282,7 (m)
Top (m)	20	20	Diverter				Total Drilled	(m)
Bottom (m)	1506	3339	Annular	HydriL GK	13 5/8	5000	Rotating Hrs	0,00 (hh:mm)
Top of Cmt (m)	541	2070	Annular				R.O.P.	0,00 (m/hr)
Last Survey (°)	0,5° / 265,5'	at 3323 (m)	Upper Rams	VBR	4 1/2" - 7"	10000	Progressive Rot. Hrs	54 (hh:mm)
LOT - FIT (kg/l)		at (m)	Middle Rams	RAMS	SHEAR	10000	Back Reaming Hrs	12,5 (hh:mm)

Reduce Pump Strokes Pressure			Middle Rams	Personnel	Planned Depth
Pump (in)	1	2	3	Comp	2
Liner	5	5		Rig	54
Strokes				Others	19
Pres. (kg/cm2)				Total	75
				Total	0

Lithology			Shows		
From (hr)	To (hr)	Op. Code	Operation Description		
00:00	07:30	DRILL E P	Estratto bit no 1 in pump out sino a finestatura csg 9 5/8 a 1506 m		
07:30	21:30	DRILL G P	Montato clampe di tubaggio (spider ed elevator)		
21:30	00:00	DRILL G 4 P	Proseguito discesa csg 7" 29# ams N80 fino a 683 m - Controllo avvitiamenti con C.A.M.		
07/04/2003					
00,00 - 06,30 Proseguito discesa csg 7" 29# ams N80 fino a 1496 m (10 tubi/ora) - Controllo avvitiamenti con C.A.M.					
06,30 - 07,00 Connesso La fleur circ. packer e circolato B/U - registrato pressioni: Q = 300, 600, 900, 1200 l/min P = 28, 42, 53, 63 Kg/cm2					

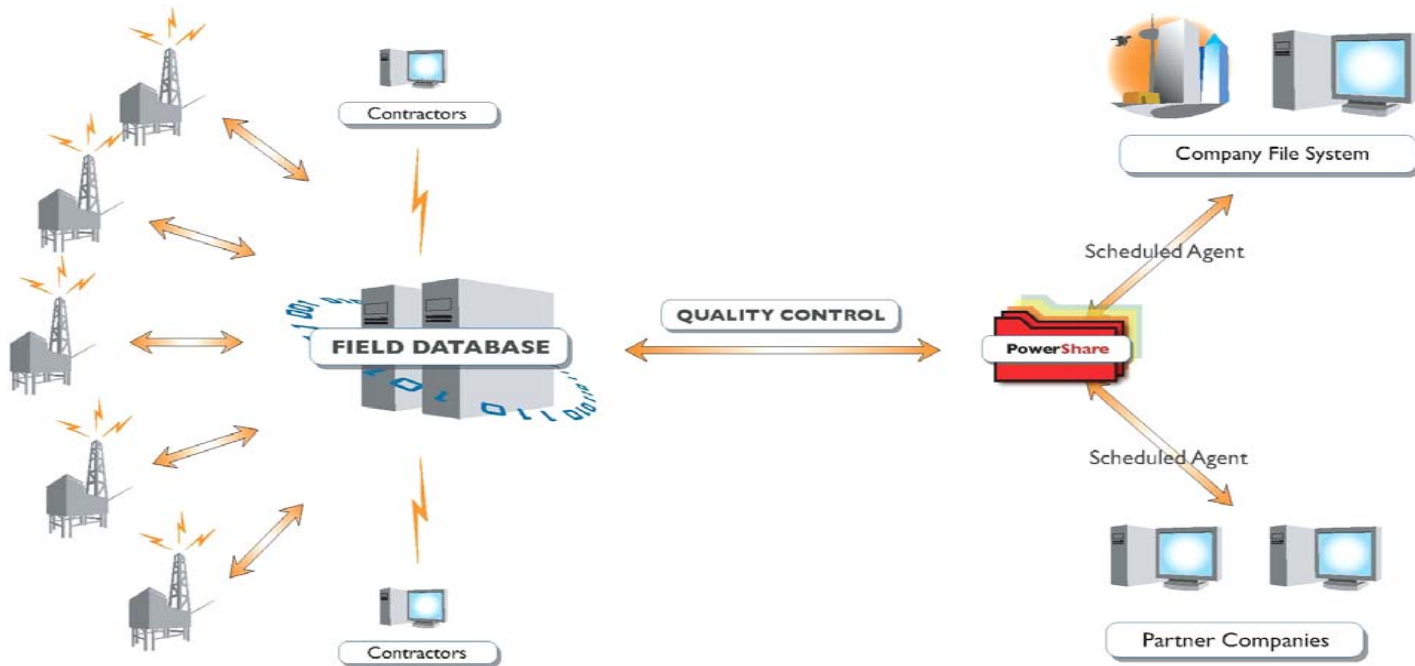
24 h summary Estrazione bit - Scoppiaggio bha - Preparativi e discesa csg 7" in corso

24 h forecast Discesa csg 7" att: a 1496 m Discesa csg 7" fino a 3339 m - Cementazione

Operation at 07:00	Discente csg 7" att: a 1496 m				24 h forecast				Discesa csg 7" fino a 3339 m - Cementazione						
Mud Type	LT	IE	SO	Bit Data	No	Run No	No	Run No	Bottom Hole Assembly No	Ø (in)	Part L.	Prog L.	Partial	Prog.	Rot. Hours
Density	1,43		(kg/l)	1	2				FM 2565	9 1/2	0,3	0,3	0	16,4	
Viscosity	75		(sec/qt)	Manuf.					X-COVER	9 3/4	0,44	0,74	0	16	
P.V.	40		(cP)	Type					MPR	9 3/4	4,46	5,2	0	16	
Y.P.	7,4		(g/100cm2)	Serial No.					MWD + UPU	9 3/4	10,27	15,47	0	18	
Gel 10"/10"	7		(g/100cm2)	ADC					STAB	8 15/32	1,66	17,13	0	10	
Water Loss			(cc/30') (cm3)	PDC					FLOAT SUB	9 3/4	0,85	17,98	0	10	
HPHT	2,8		(cc/30') (cm3)	Nozzle/TFA					SNMCSDP	9 3/4	3,18	21,18	0	10	
Pressure	35		(kg/cm2)	Start Depth					2	9 1/4	1,53	22,89	0	10	
Temp.	50		(DegC)	Cur. Depth					HWDP	5	15,88	41,57	0	93	
Cl-			(g/l)	Drilled					JAR	9 1/2	9,4	50,37	0	93	
									18 HWDP	5	164,87	215,84	0	93	

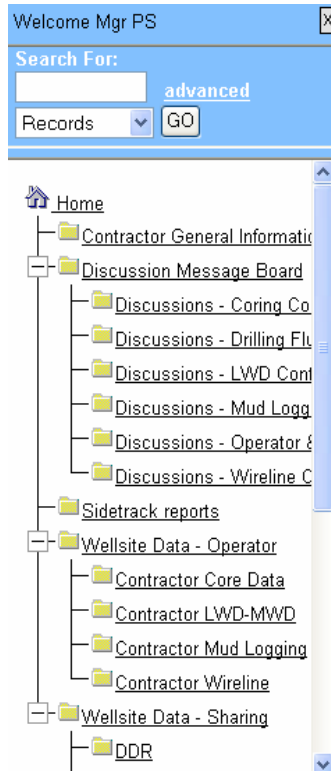
Data Flow for Multiple Rigs

DATA FLOW FOR MULTIPLE RIGS



XMLPower Share Folder Views

Operating Company View



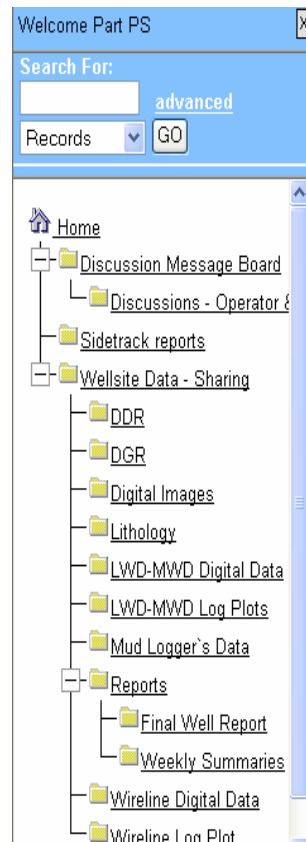
Welcome Mgr PS

Search For: advanced

Records

- Home
 - Contractor General Information
 - Discussion Message Board
 - Discussions - Coring Co
 - Discussions - Drilling Fl
 - Discussions - LWD Cont
 - Discussions - Mud Logg
 - Discussions - Operator &
 - Discussions - Wireline C
 - Sidetrack reports
 - Wellsite Data - Operator
 - Contractor Core Data
 - Contractor LWD-MWD
 - Contractor Mud Logging
 - Contractor Wireline
 - Wellsite Data - Sharing
 - DDR

Partner View



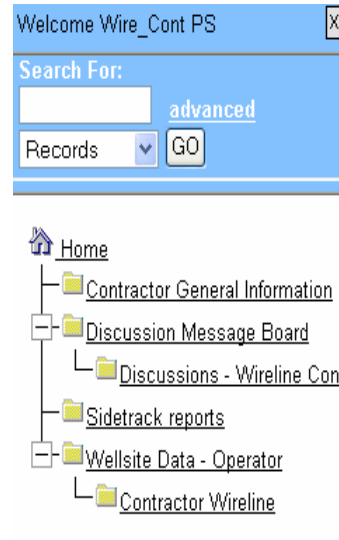
Welcome Part PS

Search For: advanced

Records

- Home
 - Discussion Message Board
 - Discussions - Operator &
 - Sidetrack reports
 - Wellsite Data - Sharing
 - DDR
 - DGR
 - Digital Images
 - Lithology
 - LWD-MWD Digital Data
 - LWD-MWD Log Plots
 - Mud Logger's Data
 - Reports
 - Final Well Report
 - Weekly Summaries
 - Wireline Digital Data
 - Wireline I on Plnt

Contractor View



Welcome Wire_Cont PS

Search For: advanced

Records

- Home
 - Contractor General Information
 - Discussion Message Board
 - Discussions - Wireline Con
 - Sidetrack reports
 - Wellsite Data - Operator
 - Contractor Wireline

Government View



Welcome Gov PS

Search For: advanced

Records

- Home
 - Wellsite Data - Sharing
 - Government Zone

Directory Structure

- Home
 - Administration
 - Calendar of Meetings
 - Contractor General Information
 - Discussion Message Board
 - Document Translations
 - Finance
 - Health, Safety, & Environment
 - New Petrolink Product
 - PowerShare
 - Request for Information
 - Wellsite Data - Operator
 - Wellsite Data - Sharing

Home - Wellsite Data - Operator

File Edit View Options Help Page 1/1

Date	Report	Catego	Rig	Comment	Source[+] [-]
	Contractor LWD/MWD				
	Contractor Mud Logging				
	Contractor Wireline				
	Cost Reports				
	Daily Drilling Report				
18 Aug 2004					
<input type="checkbox"/>	18 Aug 2004	test	123-12- Drilling 3a Rig	Test2...	Michel Lemos (1) 102Kb

XMLPower Share - View All Data

PowerShare							
Folder Mode							QC'd Well Data Demo Database (PSV3)
File	Edit	View	Options	Help			
View All Data	Sort by->	Display rows ->	View Folder Access	Filter	Databases	Expand Folder Tree	Collapse Folder Tree
Date	Report Type	Interval	Well	Rig	Comment	Source	[+] []
5 Mar 2005							
5 Mar 2005	Daily Drilling Report	-	NFQ-1	Ensco 94	...	Drilling Engineer	
5 Mar 2005	Daily Drilling Report	-	NFE-1	Noble Cees van Diemen	...	Drilling Engineer	
5 Mar 2005	Daily Drilling Report	-	NFR-1	Noble Jimmy Pucket	...	Drilling Engineer	
5 Mar 2005	HSE - RasGas Near Miss Report	-			When a near miss - or a safety hazard is notice - please complete the attached form...	Drilling Manager	(1) 0.07Kb
5 Mar 2005	Safety Requirements for Contractors	-			All Contractor Personnel going offshore must compelte the following training...	Drilling Manager	(1) 0.07Kb
4 Mar 2005							
4 Mar 2005	Wireline Log Plot	3065-4068	NFQ-1	Ensco 94	Composite Plot...	Logging Team	
4 Mar 2005	Wireline Log Plot	3065-4068	NFE-1	Noble Cees van Diemen	Composite Plot...	Logging Team	
4 Mar 2005	Wireline Log Plot	3065-4068	NFR-1	Noble Jimmy Pucket	Composite Plot...	Logging Team	
4 Mar 2005	Wireline Digital Data	3605-4068	NFE-1	Noble Cees van Diemen	Composite Data...	Logging Team	

XMLPower Share Features and Benefits

Feature	Benefit
File Directory Structure	User Friendly – Mirror Corporate Directory Structure
Import / Export Capability	Data can be exchanged with LAN
Group Access Privilege	Improved Flexibility and Control
Customized Template	Wider Scope of Use
Multiple Group Posting Access	Contactors and Partners Can Post
E-mail alert	Allows specific user groups to be notified when data is posted
E-mail of Data	Data can be e-mailed into database
Improved Filtering and Sorting	Ability to find data faster

XMLPower Doc Overview

- **Economical:** Customized document management for specific projects
- **Web based:** No proprietary or licensed/leased software
- **FAST:** Access on **MULTIPLE SERVERS** – large data files can be downloaded an order of magnitude faster on a local server instead of access via the internet
- **Security**
 - SSL version 2.0 with 128 bit encryption
 - Individual user names and passwords issued by XMLPower
 - Complete virus scanning of all uploaded documents
- **Structured and Organized:**
 - Pre-defined reference fields to assist in assigning a document reference
 - PDF of each document file entered
 - Composite PDF containing ALL comments from ALL reviewers
 - Pre- defined workflow with 7 levels

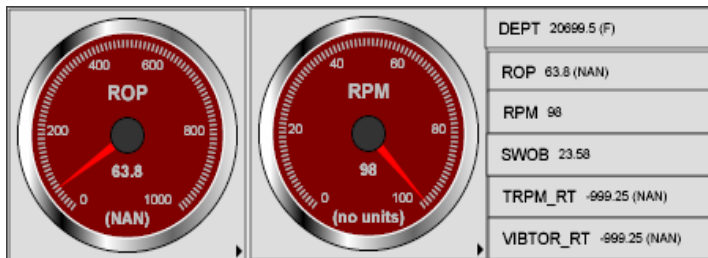
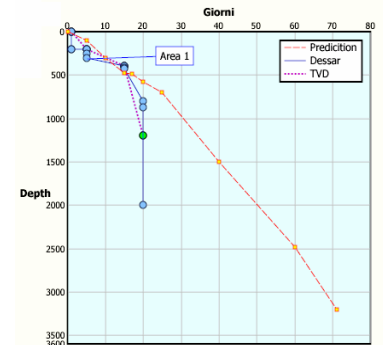
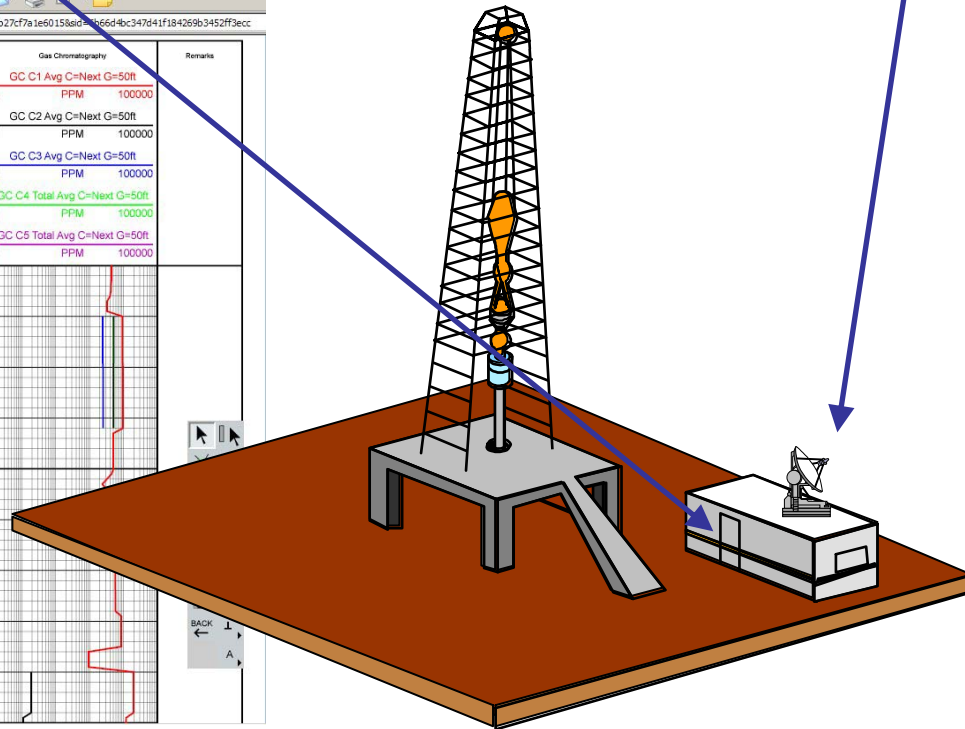
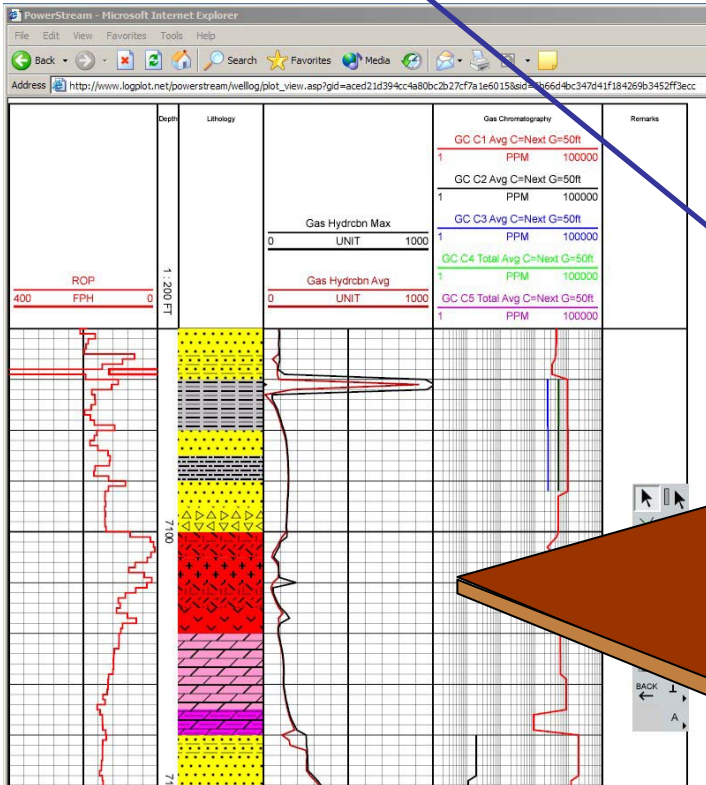
XMLPower Document Management

Users	Responsibilities
Document Controller	Logs all documents in from contractors Assign a reference and workflow Returns documents to contractors once all reviews are completed
Specialists	Technical Personnel responsible for checking document received from the Document Controller
Team Leader	Responsible to insure documents are reviewed by <u>ALL</u> Specialists in the team. Forwards Documents to Document Checker
Document Checker	Insures comments are complete and in order. Checks to make sure composite PDF File with all comments are attached.
Contractor	Generates Reference Fields and Document Titles. Submits and Receives Documents

XMLPower Stream – Real-Time Data Transmission

Data Acquisition unit

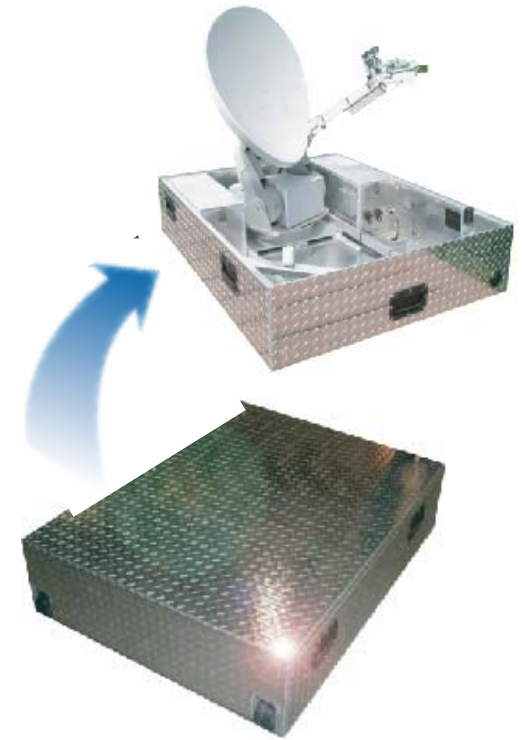
XMLPower Communication System



XMLPower Satellite Services



POWER Dish Mobile and Flexible



This compact, fully automated, robust unit is designed with highly mobile, tough field conditions in mind. It's clean, all aluminum structure can be mounted on a vehicle, and with one push of a button, be online within four minutes.

VSAT Solutions

